

# Census 2010

What's Available  
What to Expect  
What to Do Next

Presented By: Todd Steiss, Parsons Brinckerhoff

April 27<sup>th</sup>, 2011

NCMUG

# Census 2010

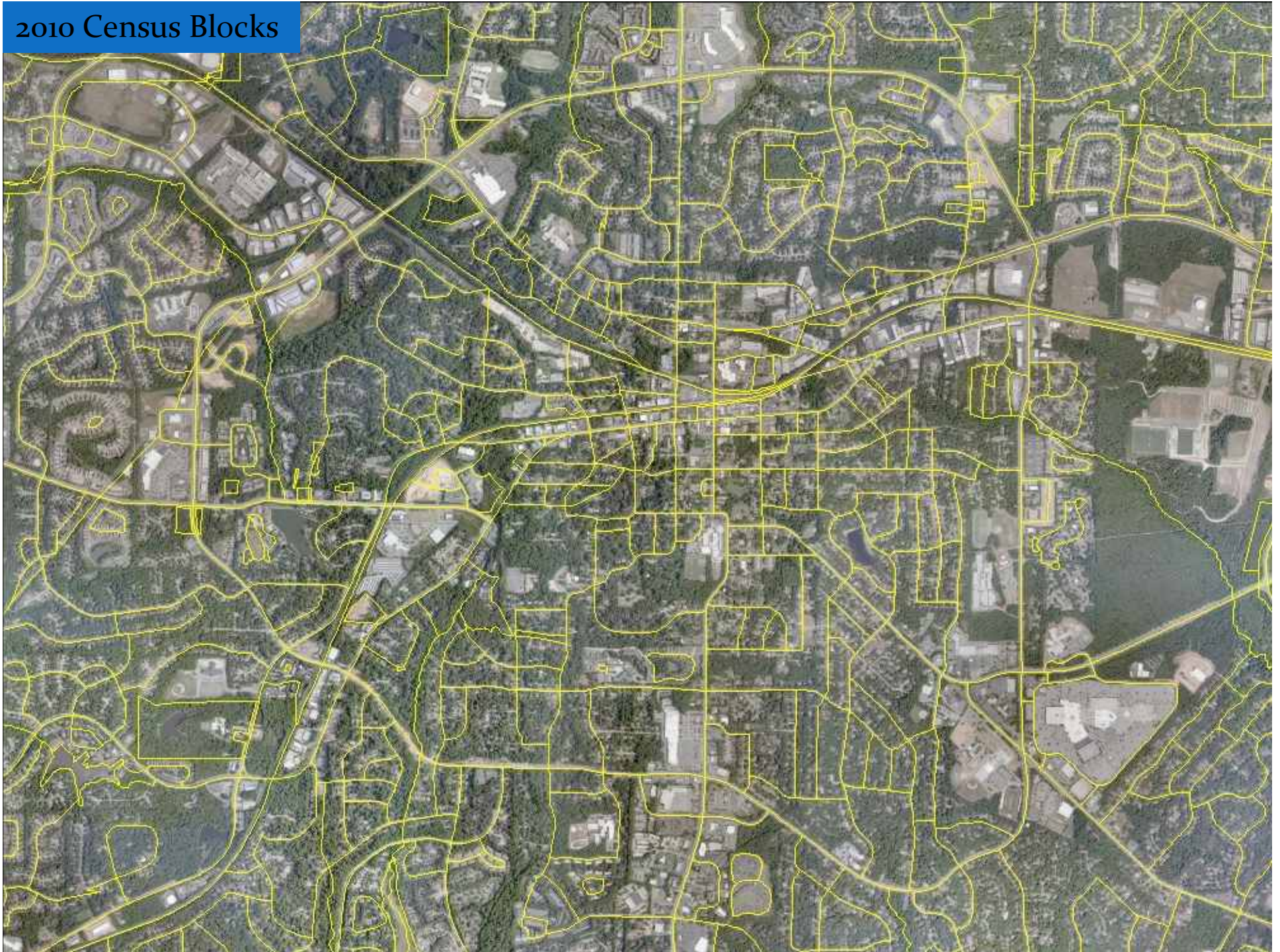
## What's Available Now

• Census Block Geography (shapefiles)

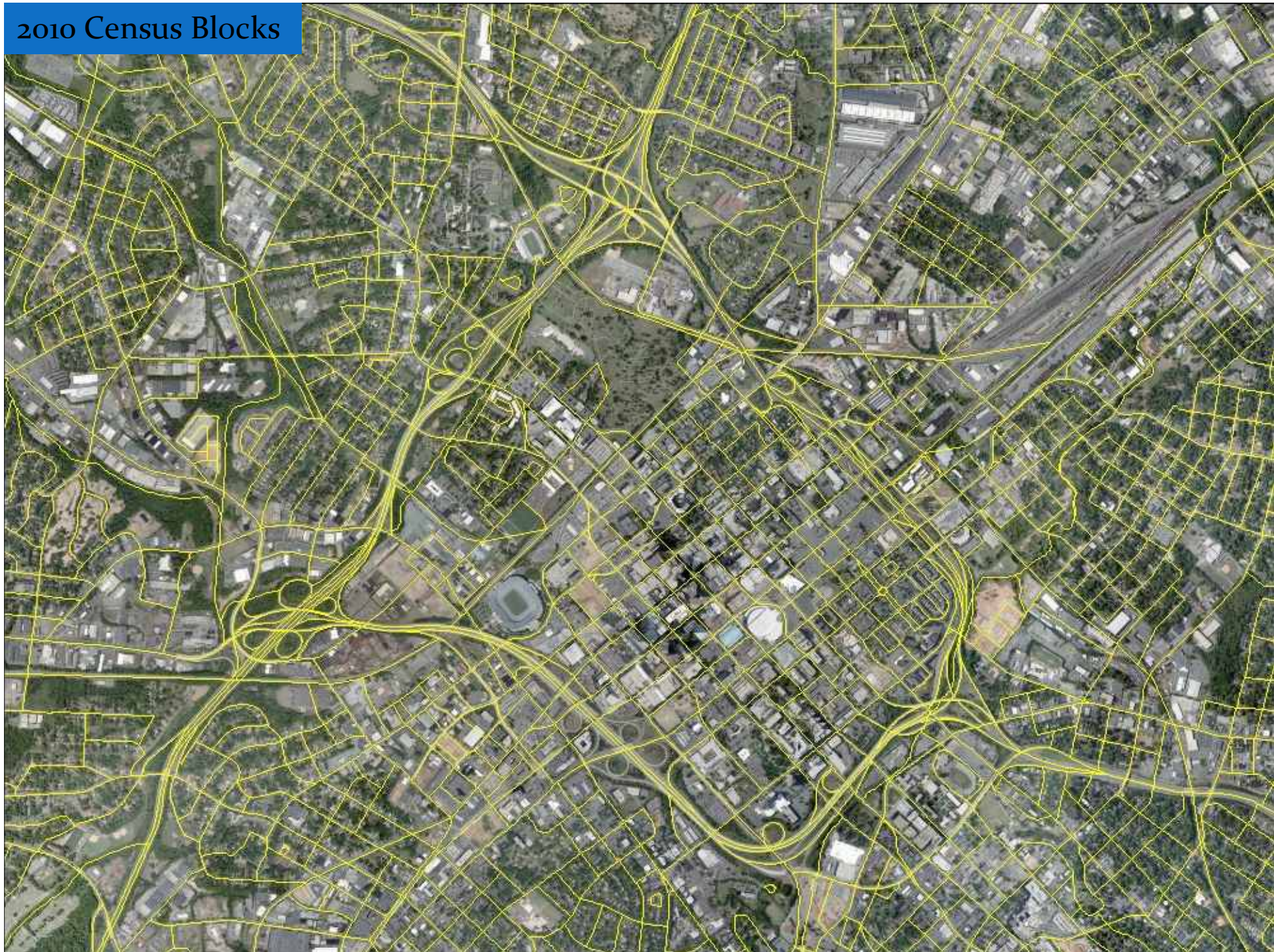
• Census Redistricting Data (P.L. 94-171) Summary File (block level):

- Population counts for race and Hispanic or Latino categories
- Housing unit counts by occupancy status (occupied units, vacant units)

2010 Census Blocks



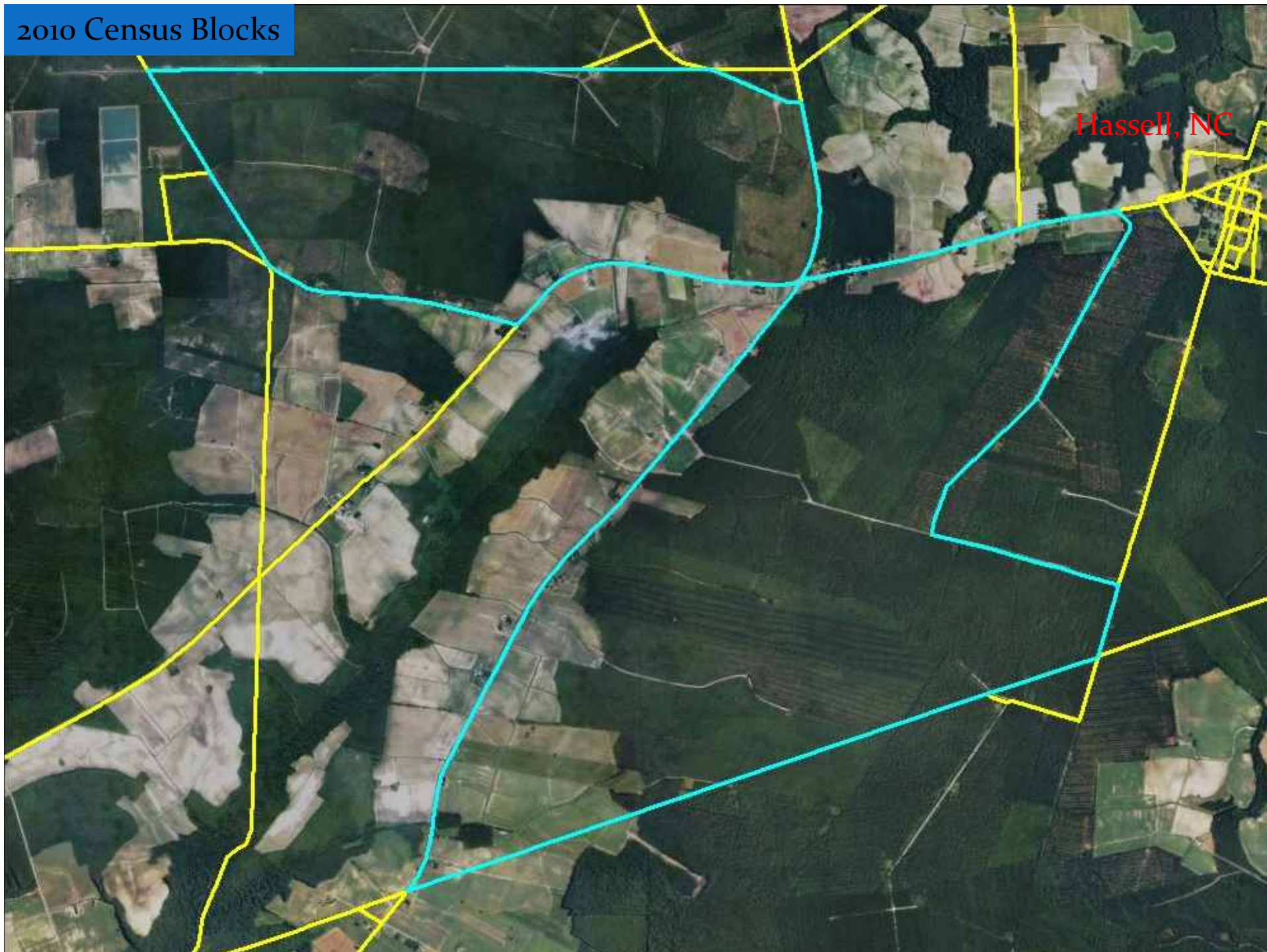
2010 Census Blocks



2010 Census Blocks



2010 Census Blocks



Hassell, NC

2010 Census Blocks



# Census Redistricting Data (P.L. 94-171) Summary File: Table of Contents

**File 01—File Linking Fields** (*comma delimited*). These fields link File 01 with the geographic header and other files in the data set.

Field name	Data dictionary reference name	Max size	Data type
File Identification	FILEID	6	A/N
State/U.S. Abbreviation (USPS)	STUSAB	2	A
Characteristic Iteration	CHARITER	3	A/N
Characteristic Iteration File Sequence Number	CIFSN	2	A/N
Logical Record Number	LOGRECNO	7	N

**P1. RACE [71]**

*Universe: Total population*

Total:	P0010001	01	9
Population of one race:	P0010002	01	9
White alone	P0010003	01	9
Black or African American alone	P0010004	01	9
American Indian and Alaska Native alone	P0010005	01	9
Asian alone	P0010006	01	9
Native Hawaiian and Other Pacific Islander alone	P0010007	01	9
Some Other Race alone	P0010008	01	9
Two or More Races:	P0010009	01	9
Population of two races:	P0010010	01	9
White; Black or African American	P0010011	01	9
White; American Indian and Alaska Native	P0010012	01	9
White; Asian	P0010013	01	9
White; Native Hawaiian and Other Pacific Islander	P0010014	01	9
White; Some Other Race	P0010015	01	9
Black or African American; American Indian and Alaska Native	P0010016	01	9
Black or African American; Asian	P0010017	01	9
Black or African American; Native Hawaiian and Other Pacific Islander	P0010018	01	9
Black or African American; Some Other Race	P0010019	01	9
American Indian and Alaska Native; Asian	P0010020	01	9
American Indian and Alaska Native; Native Hawaiian and Other Pacific Islander	P0010021	01	9
American Indian and Alaska Native; Some Other Race	P0010022	01	9
Asian; Native Hawaiian and Other Pacific Islander	P0010023	01	9
Asian; Some Other Race	P0010024	01	9
Native Hawaiian and Other Pacific Islander; Some Other Race	P0010025	01	9



<b>P1.</b>	<b>RACE [71]—Con.</b>			
	Total—Con.			
	Two or More Races—Con.			
	Population of four races—Con.			
	White; American Indian and Alaska Native; Native Hawaiian and Other Pacific Islander; Some Other Race	P0010056	01	9
	White; Asian; Native Hawaiian and Other Pacific Islander; Some Other Race	P0010057	01	9
	Black or African American; American Indian and Alaska Native; Asian; Native Hawaiian and Other Pacific Islander	P0010058	01	9
	Black or African American; American Indian and Alaska Native; Asian; Some Other Race	P0010059	01	9
	Black or African American; American Indian and Alaska Native; Native Hawaiian and Other Pacific Islander; Some Other Race	P0010060	01	9
	Black or African American; Asian; Native Hawaiian and Other Pacific Islander; Some Other Race	P0010061	01	9
	American Indian and Alaska Native; Asian; Native Hawaiian and Other Pacific Islander; Some Other Race	P0010062	01	9
	Population of five races:	P0010063	01	9
	White; Black or African American; American Indian and Alaska Native; Asian; Native Hawaiian and Other Pacific Islander	P0010064	01	9
	White; Black or African American; American Indian and Alaska Native; Asian; Some Other Race	P0010065	01	9
	White; Black or African American; American Indian and Alaska Native; Native Hawaiian and Other Pacific Islander; Some Other Race	P0010066	01	9
	White; Black or African American; Asian; Native Hawaiian and Other Pacific Islander; Some Other Race	P0010067	01	9
	White; American Indian and Alaska Native; Asian; Native Hawaiian and Other Pacific Islander; Some Other Race	P0010068	01	9
	Black or African American; American Indian and Alaska Native; Asian; Native Hawaiian and Other Pacific Islander; Some Other Race	P0010069	01	9
	Population of six races:	P0010070	01	9
	White; Black or African American; American Indian and Alaska Native; Asian; Native Hawaiian and Other Pacific Islander; Some Other Race	P0010071	01	9
<b>P2.</b>	<b>HISPANIC OR LATINO, AND NOT HISPANIC OR LATINO BY RACE [73]</b>			
	<i>Universe: Total population</i>			
	Total:	P0020001	01	9
	Hispanic or Latino	P0020002	01	9
	Not Hispanic or Latino:	P0020003	01	9
	Population of one race:	P0020004	01	9
	White alone	P0020005	01	9
	Black or African American alone	P0020006	01	9
	American Indian and Alaska Native alone	P0020007	01	9
	Asian alone	P0020008	01	9
	Native Hawaiian and Other Pacific Islander alone	P0020009	01	9
	Some Other Race alone	P0020010	01	9

<b>P4.</b>	<b>HISPANIC OR LATINO, AND NOT HISPANIC OR LATINO BY RACE FOR THE POPULATION 18 YEARS AND OVER [73]—Con.</b>			
	Total—Con.			
	Not Hispanic or Latino—Con.			
	Two or More Races—Con.			
	Population of four races—Con.			
	Black or African American; Asian; Native Hawaiian and Other Pacific Islander; Some Other Race	P0040063	02	9
	American Indian and Alaska Native; Asian; Native Hawaiian and Other Pacific Islander; Some Other Race	P0040064	02	9
	Population of five races:	P0040065	02	9
	White; Black or African American; American Indian and Alaska Native; Asian; Native Hawaiian and Other Pacific Islander	P0040066	02	9
	White; Black or African American; American Indian and Alaska Native; Asian; Some Other Race	P0040067	02	9
	White; Black or African American; American Indian and Alaska Native; Native Hawaiian and Other Pacific Islander; Some Other Race	P0040068	02	9
	White; Black or African American; Asian; Native Hawaiian and Other Pacific Islander; Some Other Race	P0040069	02	9
	White; American Indian and Alaska Native; Asian; Native Hawaiian and Other Pacific Islander; Some Other Race	P0040070	02	9
	Black or African American; American Indian and Alaska Native; Asian; Native Hawaiian and Other Pacific Islander; Some Other Race	P0040071	02	9
	Population of six races:	P0040072	02	9
	White; Black or African American; American Indian and Alaska Native; Asian; Native Hawaiian and Other Pacific Islander; Some Other Race	P0040073	02	9
<b>H1.</b>	<b>OCCUPANCY STATUS [3]</b>			
	<i>Universe: Housing units</i>			
	Total:	H0010001	02	9
	Occupied	H0010002	02	9
	Vacant	H0010003	02	9

**DOES NOT INCLUDE GROUP QUARTERS POPULATION**

# Census 2010

## Available June 2011 – August 2011

Summary File 1 (SF 1) (block level):

- Population counts for 63 race categories and Hispanic or Latino
- Population counts for many detailed race and Hispanic or Latino categories, and American Indian and Alaska Native tribes
- Selected population and housing characteristics (including group quarters)

## Available in 2013

Census Transportation Planning Package (CTPP) (TAZ level)

## Will Not Be Provided

Summary File 3 (SF 3):

- This was the Block Group Level Data based on the “Long Form” (1-6 households)
- Most of this data can be obtained from the American Community Survey (ACS)

# American Community Survey

## Data Products Release Schedule

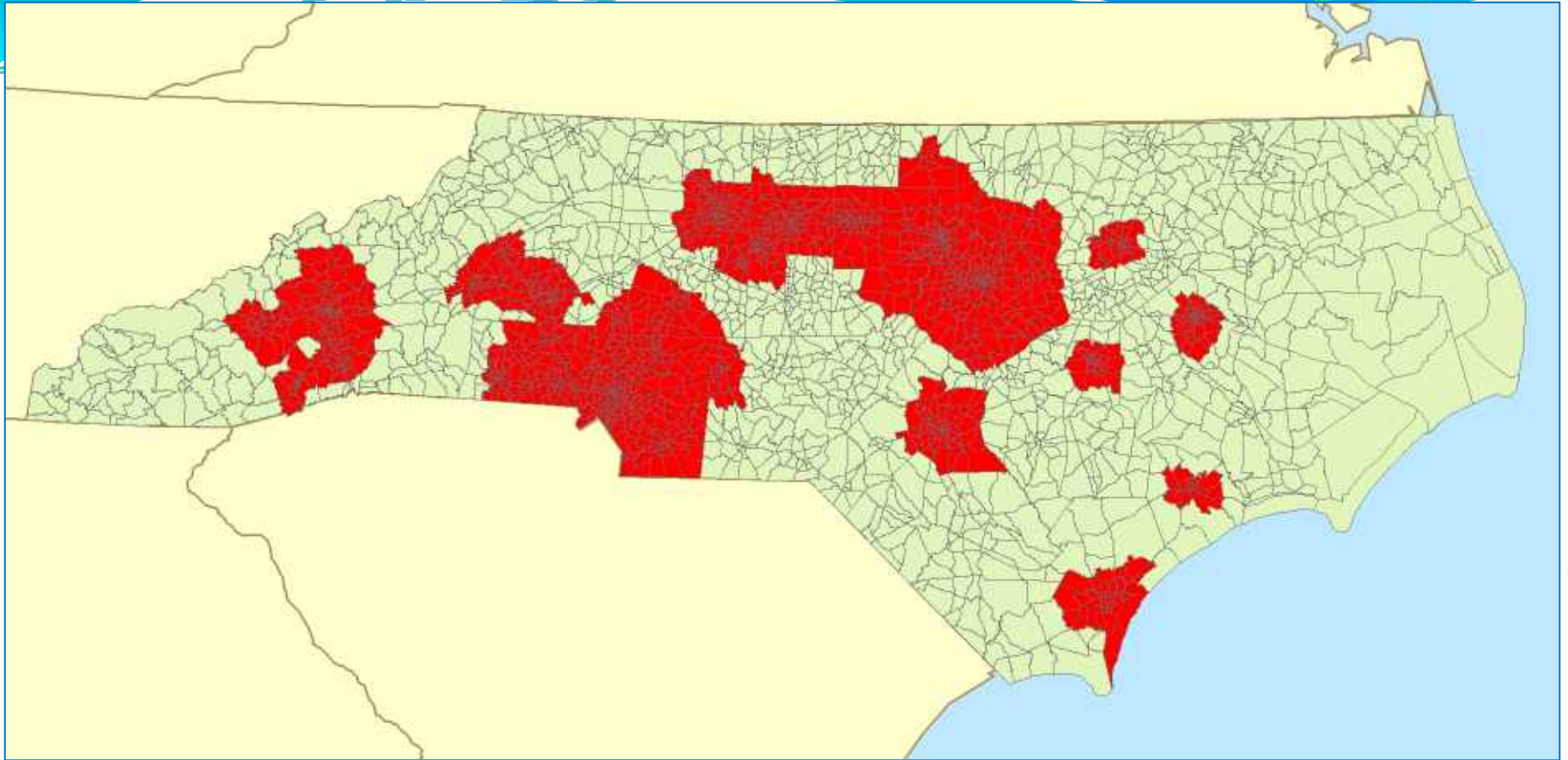
Data Product	Population Size of Area	Data released in:							
		2006	2007	2008	2009	2010	2011	2012	2013
1-Year Estimates for Data Collected in:	65,000+	2005	2006	2007	2008	2009	2010	2011	2012
3-Year Estimates for Data Collected in:	20,000+	2005-2007		2006-2008	2007-2009	2008-2010	2009-2011	2010-2012	
5-Year Estimates for Data Collected in:	All Areas*	2005-2009			2006-2010	2007-2011	2008-2012		

\* Five-year estimates will be available for areas as small as census tracts and **block groups**.  
Source: US Census Bureau

### üACS Geography:

- Current ACS Data uses **2000** Census Geography
- New Data (potentially in December) will use **2010** Census Geography

## Statewide Model Zones



- Approximately 2600 SMZs
- SMZs within MPOs are based on clusters of TAZs
- Approximately 1400 SMZs cover all the MPO regions
- The remaining 1200 SMZs cover the rest of the state

# Census 2010

What's Available  
What to Expect  
What to Do Next

Presented By: Todd Steiss, Parsons Brinckerhoff

April 27<sup>th</sup>, 2011

NCMUG